



Overview

XLinear IP67 is a sleek and robust IP67 linear LED fixture with a homogenous appearance which delivers approximately 1369 lumens per mtr. also for total colour control. XLinear is made from extremely durable anodised Aluminium which makes this luminaire suitable for the harshest of environments and is available in lengths of up to 1550mm.

Applications

- Facades
- Underbench
- Planters
- Exterior

Features

- IP67
- Available in 2200K - 2400K - 2700K - 3000K - 3500K - 4000K - 5000K - 5700K
- 3 step MacAdam
- CRI > 80
- 80 Lumens per Watt (4000K)
- 115° Beam Angle
- LM80 lifetime
- 24V Constant Voltage
- Dimmable
- Robust Aluminium body for superior strength
- Adjustable or fixed brackets - various options
- 1550mm Maximum length

Benefits

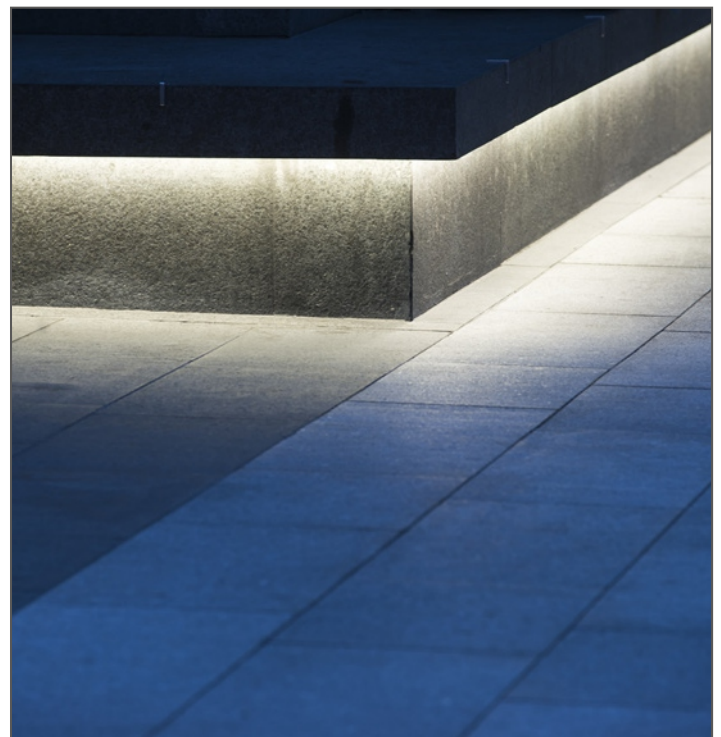
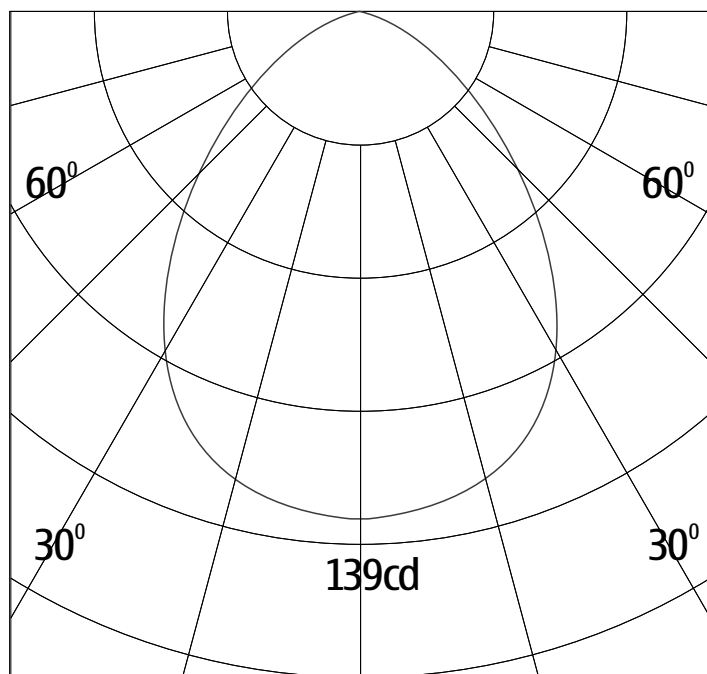
- Various lengths available up to 1550mm
- Suitable for exterior use in the harshest of environments
- Homogenous appearance (White)
- Various colour temperatures available
- Create stunning colour changing effects by 1-10V or DALI
- Excellent colour rendering
- Highest quality SAMSUNG LED technology for all Whites
- Excellent lumen maintenance over time
- Excellent Thermal Management
- Various fixing positions
- ROHS compliant

Technical information

Xlinear IP67

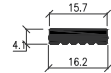
Product Specification	Xlinear IP67
Lumen Output (based on 4000k)	1369-876-480
Watts (per mtr)	17W-11W-7W
Efficacy (Based on 4000K @17W)	80lm/W
Colours	2200K-2400K-2700K-3000K-3500K-4000K-5000K-5700K
CRI	80>
LED Chip	SAMSUNG 281B (7/11W) , 282B (17W)
Binning	3 Step MacAdam
Dimming	0-10V-DALI-SWITCHED
Input Voltage	230VAC
Output Voltage	24V
Beam Angles	115°
Lifetime @ Lm80	50,000hrs @ 25°C
Operating Temp	-25°C to 75°C
IP Rating	IP67
Cover/Lens	Opal Polycarbonate
Finish	Silver Anodised Aluminium
Mounting	Fixed or Adjustable Brackets
Exterior Connection	IP68
Lengths	Max 1550mm

Photometrics



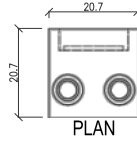
Specifications are subject to change without prior notice. Please refer to our website for the most up to date version.

DIFFUSER



SECTION

FLAT END CAP

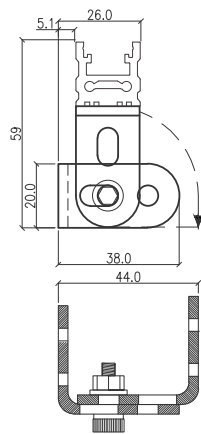


PLAN

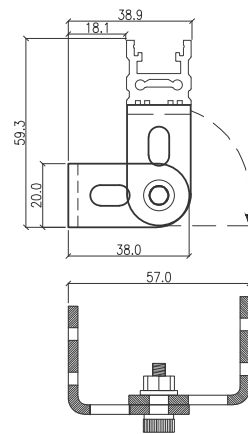


SIDE VIEW

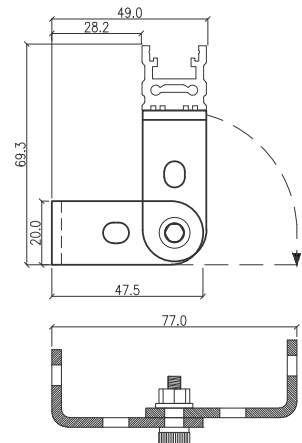
MOUNTING HINGE



A1 - 44mm

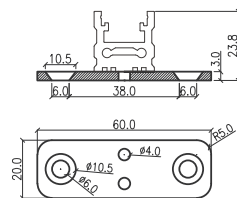


A2 - 57mm

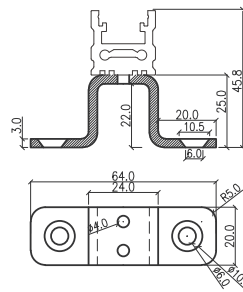


A3 - 77mm

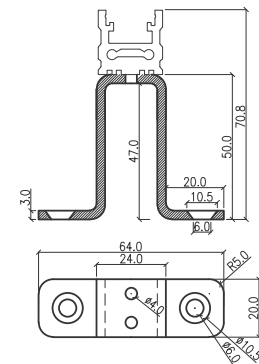
FLAT MOUNTING PLATE



F1 - FLAT



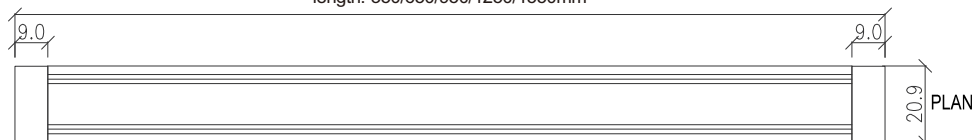
F2 - 25mm



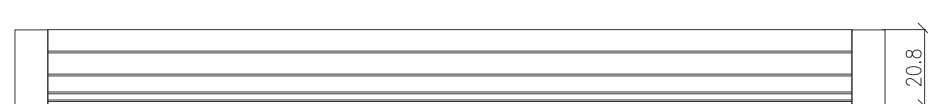
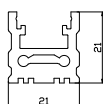
F3 - 50mm

FULL SET WITH IP67 END CAP

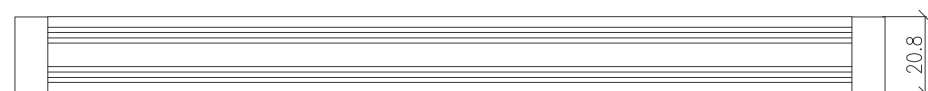
length: 350/650/950/1250/1550mm



PLAN



SIDE VIEW



BOTTOM VIEW